

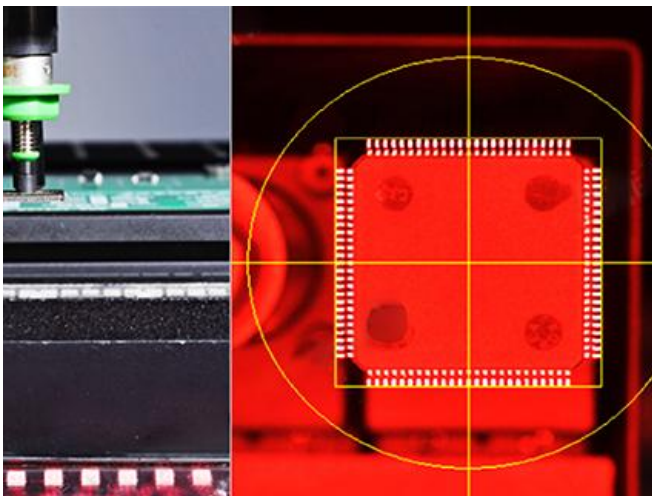
**SMT Flexible Pick and Place Machine**



As a flexible pick and place for smd is reinforced at Flex-6. With a head with one gantry and 6 spindles, Flex-6 can be used 0402 to 45mm IC parts. Flex-6 improved actual productivity and placement quality by using high speed and high precision electrically driven feeders.

**Features:**

1. English operating system on the basis of imported placement machines to ensure the simplicity and convenience of the operator.
2. I.C.T unique mounting pressure control system, full closed-loop mount control system in Z-axis placement process to ensure the effective height and placement accuracy .
3. I.C.T exclusive image recognition system uses digital identification and equips with new industrial cameras.
4. Marble platform is adopted to improve the stability and efficiency of the machine.
5. The first domestically servo motor controlled independently arm with six heads to achieve, optimum placement speed and accuracy.
6. High precision hardware, imported top brands core parts to ensure placement precision, communication systems and so on.
7. Industrial-grade computer control and windows operating system.
8. Standard feeder with sensor to prevent components hip up to ensure safe operation.
9. X-Y-axis is driven by servo motors to ensure long-term stability and high accuracy of the machine.
10. Three-stage transmission conveyor, provide production speed.
11. High-speed flight vision system, 0 second recognition, improve production efficiency.



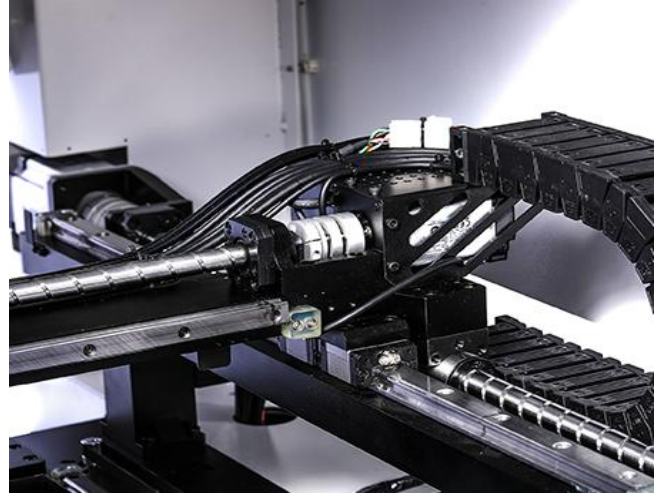
**Vision system**

Six in-line high-precision cameras and fixed camera, multiple light sources, 0-second recognition technology, unique algorithm system, can effectively identify 0402-45mm parts.



**Mount system**

high-speed heads, six sets of guide rail and six angle rotary motors can ensure high precision mounting, servo motors, the mounting height is fully closed-loop.



**Feeding system**

Pneumatic feeder feeding, mature technology, stable platform, tape,stick and tray is compatible,maximum input 60pcs, electric is optional.

**Driver system**

Casting parts are used to ensure the stability of the machine. XY adopts servo motor and guide rail. provide mounting accuracy and stability.



**Platform system**

High precision marble table is used to ensure the stability and operation accuracy of the machine.



**Transport system**

The three-stage transmission conveyor reduces the time of input and output pcb.

**Materials List:**

No.	Item	Brand	Original
1	Ball screw	THK	Japan
2	Linear Guideway	PMI	Taiwan

3	Servomotor& driver	Panasonic	Japan
4	Sensor	OMRON	Japan
5	Magnetic valve	SMC,CKD,AIRTAC	Japan, Taiwan
6	Software	I.C.T	China
7	Switch	SMC, IDEC	Japan
8	Bearing	NSK	Japan
9	Soft Cable	IGUS	Germany
10	Tanks chain	IGUS	Germany

**Specification:**

Model	I.C.T Flex-2	I.C.T Flex-4	I.C.T Flex-6
Speed(IPC9850)	5600CPH	8000CPH	14000CPH
Head Number	1	1	1
Nozzle Number	2	4	6
PCB Size(mm)	50*50 ~ 420*270	50*50 ~ 480*300	50*50 ~ 650*370
PCB Thickness	0.4~6mm		
PCB Warpage	<1%		
CCD	1 Mark CCD + 2 CCD + 1 Fixed CCD	1 Mark CCD + 4 CCD + 1 Fixed CCD	1 Mark CCD + 6 CCD + 1 Fixed CCD
Component Range	0402~45mm IC		
Placement Accuracy	+/-50 μm		
Component Height	≤20mm		
Feeder Inputs	25pcs(8mm)	46pcs(Front20,Rear26)	60pcs(Front24,Rear36)
Convey Time	3-5S		
Transport Height	900±20mm		
Transport Direction	Left-Right; Right-Left		
Mark Types	Circle,Triangle,Square,Diamond,Cross		
New Product Set-up Time	<10Mins		
Air Pressure	4.5~6Kg/cm2		
Power Supply	AC:220±10%,50/60HZ,600W	AC:220±10%,50/60HZ,1.5Kw	AC:220±10%,50/60HZ,2Kw
Control Method	PC Control		
Dimension(mm)	L1050*W850*H660	L1095*W1165*H1400mm	L1390*W1180*H1370
Weight	Approx:150kg	Approx:450kg	Approx:650kg

\* I.C.T keeps working on quality and performance,specifications and appearance may be updated without particular notice.

**Thanks for choosing I.C.T.**  
**I.C.T looks forward to win-win cooperation.**